



OCEAN EMERALD

## MAKING MEMORIES WITH OCEAN EMERALD

*Ocean Emerald combines luxury, contemporary design and cruising perfection for the ultimate yachting experience.*

A spectacular 41 meter super yacht, imagined by architect Norman Foster and built by renowned Italian shipyard Rodriguez Yachts in 2009, Ocean Emerald was conceived for smooth yachting, elegant living and modern comfort.



OCEAN EMERALD







## A ROMANCE IN GRANDEUR

*The ultimate home and playground whilst at sea.*

Ocean Emerald is the perfect platform for a romantic getaway, an adventure family vacation or entertaining friends and guests. Ocean Emerald has a choice of outdoor deck areas for lounging and relaxation. Enjoy a dip in the upper deck Jacuzzi or chill out with a refreshing cocktail on one of the comfortable sunloungers.



## A PARAGON OF LUXURY

The yacht's interior has a contemporary feel, technologically advanced and timeless. The main deck saloon's floor-to-ceiling panoramic windows provide an abundance of light and unobstructed views.



OCEAN EMERALD



SUBLIME DINING





## GASTRONOMIC ADVENTURE UNDER THE STARS



*Dine in supreme comfort with fabulous vistas.*

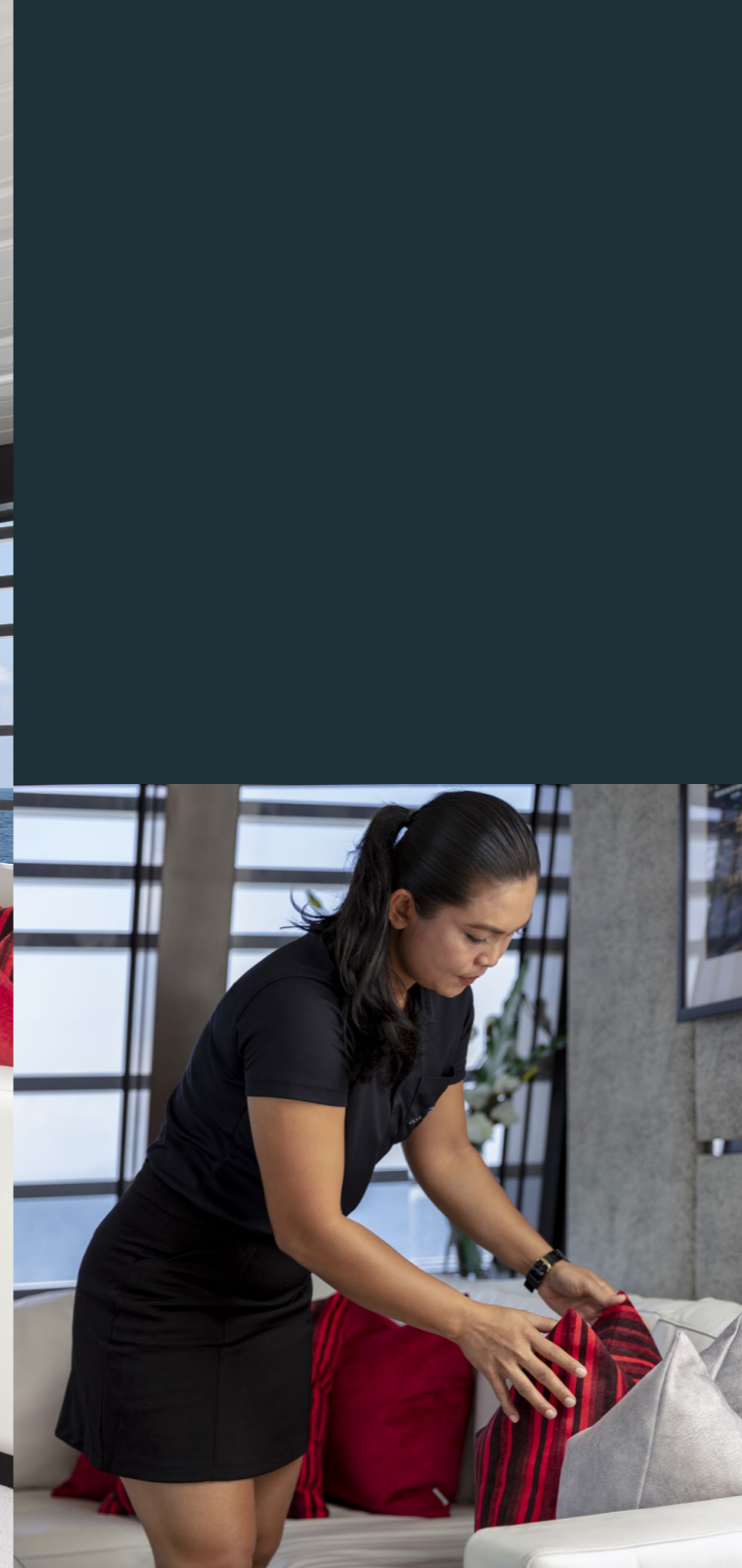
Ocean Emerald boasts a variety of drinks and dining locations both indoor and al fresco. Hospitality is highly personalized onboard Ocean Emerald and everything is tailored to suit your needs. Our talented chefs can prepare a wide range of menu selections to fit all palates and dietary requirements.

CINEMATIC ENTERTAINMENT

  
OCEAN EMERALD







## A QUIET ELEGANCE

*Enjoy spacious, comfortable living quarters with great views.*

The master suite is the ultimate indulgence. A full beam residence with king-size bed, 60 inch TV, ocean-view sofas, ensuite bathroom and two private terraces.





  
**OCEAN EMERALD**



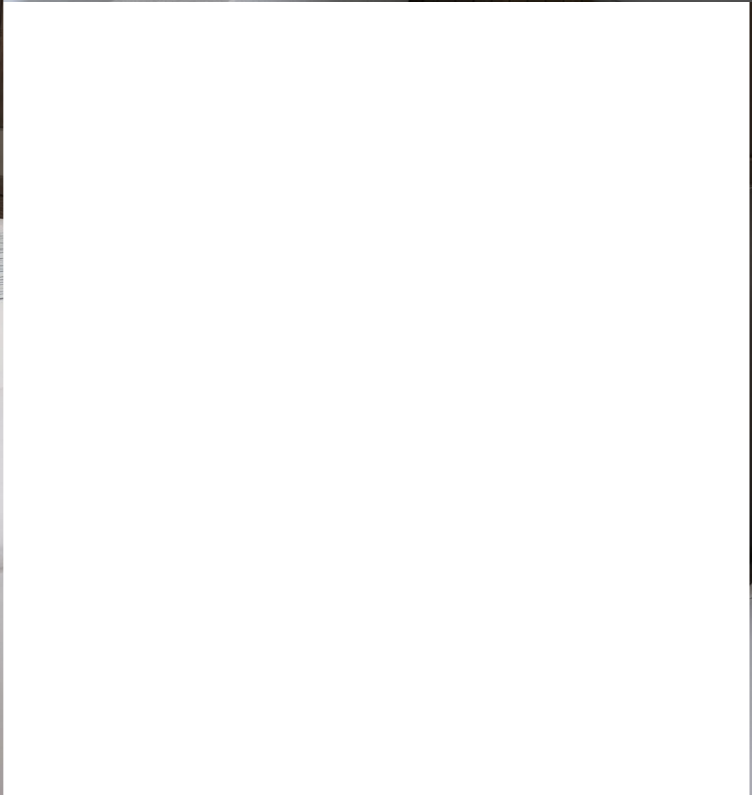
STATELY ELEGANCE



OPTIMISING YOUR NEEDS

  
OCEAN EMERALD





PLAY & EXPLORE





With an armada of toys, tenders, jet skis, kayaks and sports equipment, Ocean Emerald is an ideal yacht for those looking for a fun fueled charter and the perfect vessel to explore the magical waters of South-East Asia.





OCEAN EMERALD

## TOYS

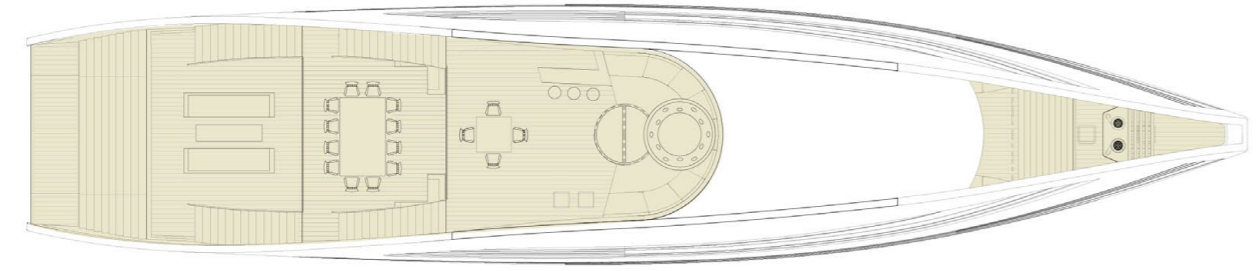
- 2x Seadoo jet skis
- 1x Seadoo jet boat 5.5 meters, four-seater
- 1x Seadoo super jet
- 2x Sea bobs
- 1x 28 ft. Axopar chase boat
- 1x 5.2 meter BTS rib with Yamaha 90 HP
- 2x one-seater kayaks
- 1x two-seater kayak
- 1x paddle board
- Towable inflatables
- Water skiing equipment
- Wake board
- 4x full sets of diving equipment
- 12x snorkeling equipment sets
- Fishing equipment



# MAGICAL JOURNEYS



SUN DECK

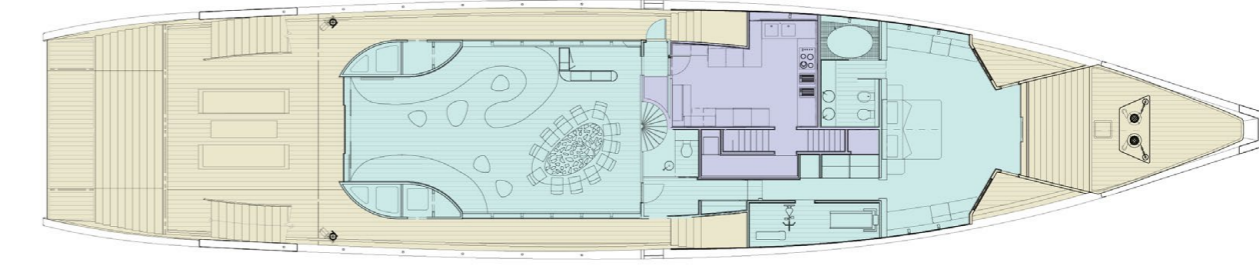


UPPER DECK

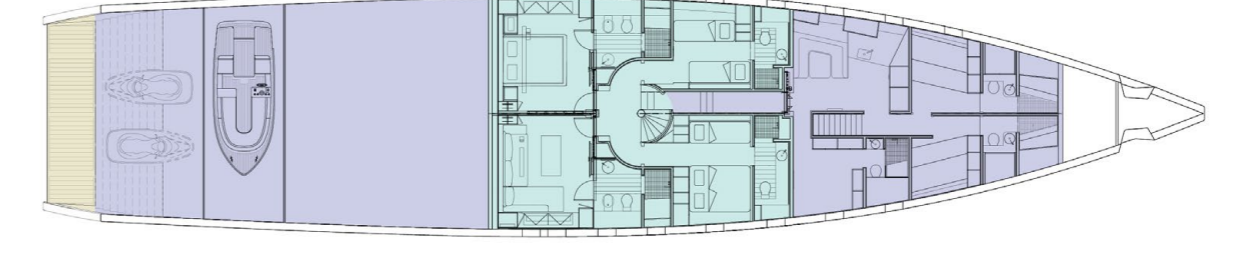


- DECK
- GUEST AREAS
- CREW/TECHNICAL AREAS

MAIN DECK



LOWER DECK



## TECHNICAL DATA

Length	41 meters
Beam	8.4 meters
Draft	2.4 meters
Range	2,600 miles
Fuel capacity	26,000 liters
Water capacity	8,000 liters
Power	2x caterpillar 1400HP
Generator	2x caterpillar 86KW
Gross tonnage	346 tonnes
Max speed	18 knots
Cruising speed	12 knots
Life Rafts	3x8-man life rafts
Crew	9
Builder	Rodriguez Yachts
Designer	Foster and Partners
Year	2009/2015
Class	RINA and LY2 large commercial yacht code

## DINING

Main deck inside table	13 people
Second deck inside table	6 people
Second deck outside table	12 people
Sun deck table	6 people

## ACCOMMODATIONS

1 master main deck

2 VIP double cabins, lower deck, these can be set up as a second master suite but if set thisway reduces berths by 2

1 standard double with 2 dropdown pullman beds, 2 to 4 berths

1 twin cabin with 1 dropdown pullman bed

Total 13 Berths

**For the ultimate luxury set up as 2 suites and no pullman beds.**

2 masters

1 double cabin

1 twin cabin

Total 8 Berths

**All cabins have bathrooms on suite.**





OCEAN EMERALD